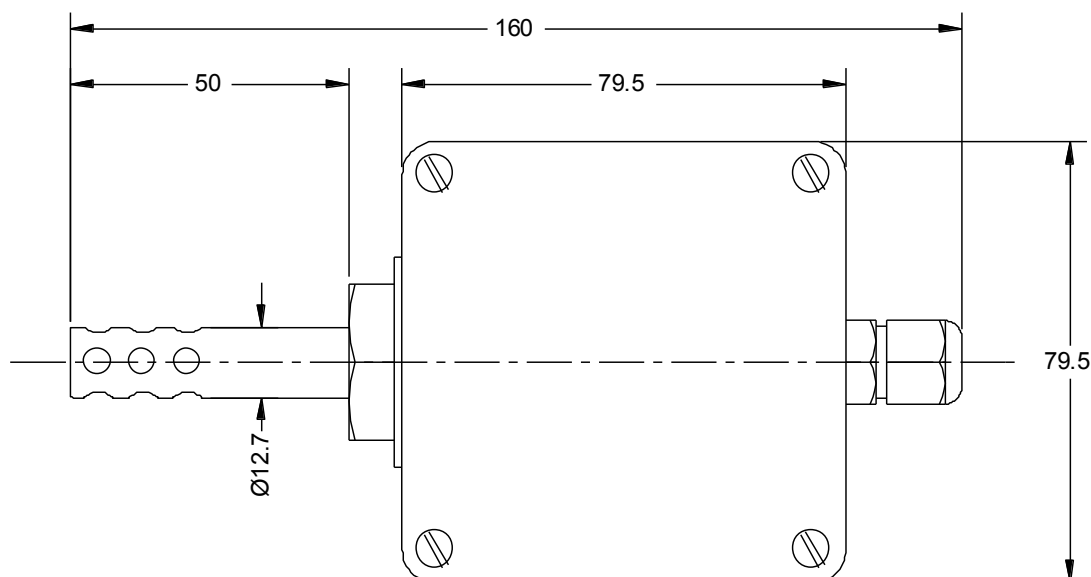
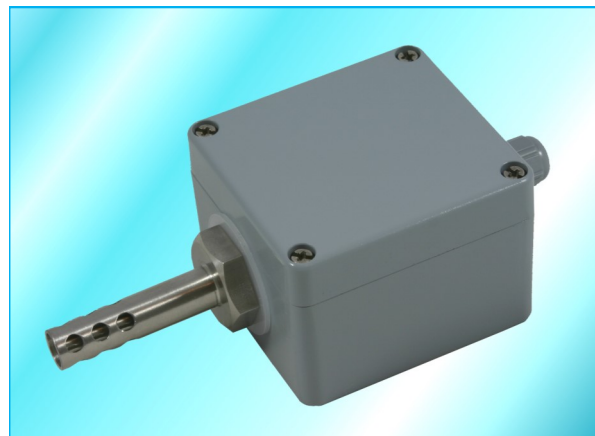


TWL-ST10-P

Pt100 Exterior Air Temperature Sensor



- Rugged Air Temperature Sensor
- Outdoor Temperature Measurement
- Ideal for use in Arduous Applications
- Available with or without Protective Shroud
- Surface Mounting Housing in ABS, Aluminium or Stainless Steel
- Choice of Terminal Block or Transmitter



Specifications

Sensor Type	Platinum Resistance Thermometer—Pt100 or Pt1000
Operating Range	-40 to 85°C
Sheath Material	316 stainless steel
Tolerance Band	Class B, Class A, 1/3 DIN, 1/5 DIN or 1/10 DIN
Wiring System	2, 3 or 4 wire, Simplex or Duplex
Head Types	A - Rectangular Aluminium Alloy, IP66 (as photo) B - KF Aluminium Alloy, IP68 C - ABS, IP67 E - KFS 316 stainless steel, IP68 (Other heads available upon request)
Head Options	A - Ceramic Terminal Block B - In Head Transmitter— Various Types Available C - Tails for Customers Own Transmitter

TWL-ST10-P

Pt100 Exterior Air Temperature Sensor



www.kobold-direct.co.uk

TWL-ST10-P

Sensor Type	
Pt100	A
Pt1000	B

Number of wires	
2 wire	2
3 wire	3
4 wire	4

No. of detectors	
Simplex	S
Duplex	D

Tolerance	
Class A	A
Class B	B
1/3 DIN	C
1/5 DIN*	D
1/10 DIN*	E

Specials Code	
Refer to Sales Office	

Head Options	
Block	1
Transmitter*	2
Tails	3

Head Type	
Rect.	A
KF	B
ABS	C
KFS	D

Sheath Shrouded?	
Yes	1
No	0

* Not available for Pt1000

NOTE: Some sheath diameter / lead type combinations require a pot seal. Some option combinations not possible.

This data sheet gives details of the most popular options available for this type of sensor but is not intended to give an exhaustive list of possibilities. If you have a special requirement please do not hesitate to contact our sales office for assistance.

Accessories for your sensor...



Compression Fittings



Pockets / Thermowells



Extension Cables