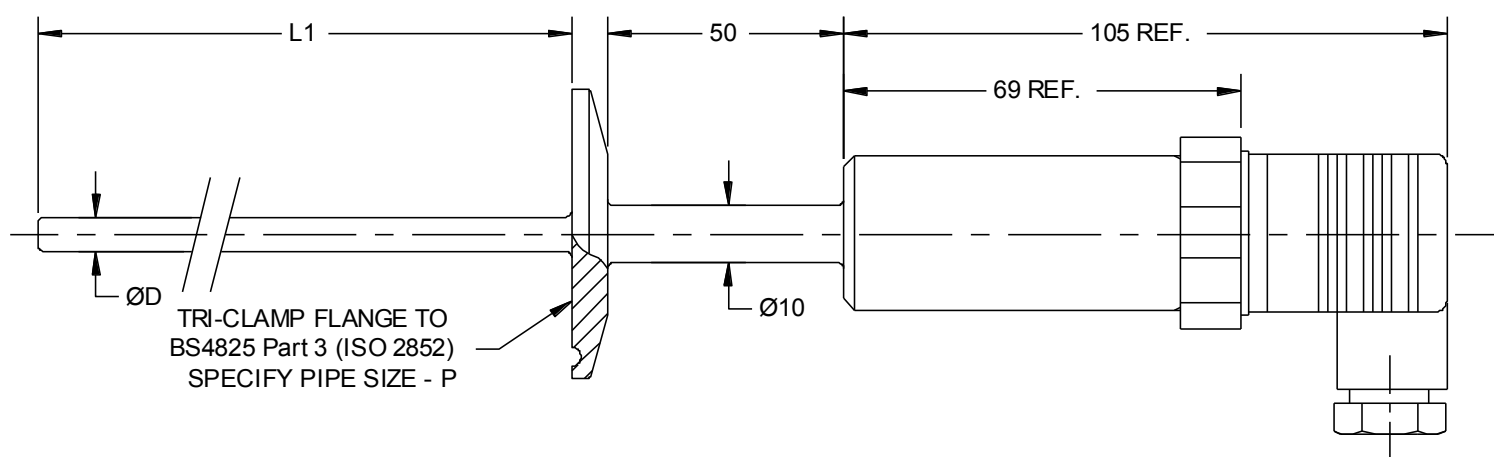
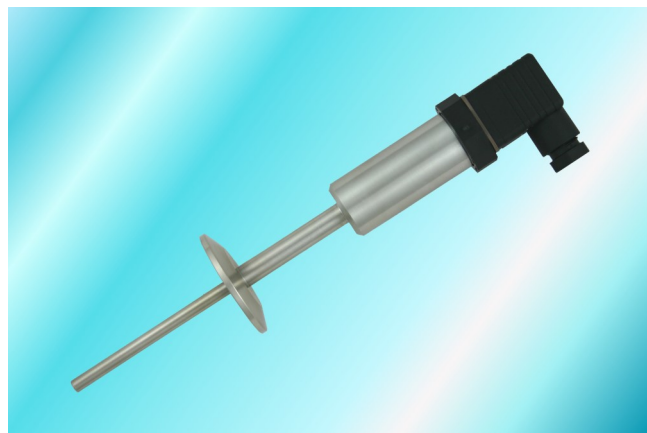


## LTS23-TX

### Compact Temperature Transmitter with Standard Sanitary Hygienic Connection



- Compact Temperature Transmitter with Standard Sanitary Hygienic Connection
- Tri-Clamp, RJT and IDF
- Lagging Extension allows Sensor to operate up to 250C
- 4-20mA Output
- Clean Simple Design
- Ideal for use in Food, Beverage & Dairy Industries
- Choice of Stainless Steel Sheath & Body Sizes
- IP65 or IP67 Connector Options
- UKAS or Traceable Calibration Available



#### Specifications

Sensor Type	Platinum Resistance Thermometer—Pt100, 3 wire
Output	4-20mA, 2 wire
Power Supply	10-30V d.c. Loop Powered
Sensor Tolerance Band	Class B, Class A, 1/3 DIN, 1/5 DIN or 1/10 DIN
Operating Range of Sensor	-50 to +250°C
Ambient Temperature	0 to +70°C
Accuracy	±0.25%
Sheath Material	316 stainless steel
Electrical Connector	A—DIN43650 IP65 (as shown in photo) B—M12 IP67

# LTS23-TX

Compact Temperature Transmitter  
with Standard Sanitary Hygienic Connection



www.kobold-direct.co.uk

LTS23-TX    ☐ -    ☐ -    ☐ -    ☐ -    ☐ -    ☐ -    ☐ Y

Sensor Tolerance	
Class A	A
Class B	B
1/3 DIN	C
1/5 DIN	D
1/10 DIN	E

Sheath Dia - ØD	
3.0mm	30
1/8"	32
4.0mm	40
4.5mm	45
3/16"	48
5.0mm	50
6.0mm	60
6.4mm	64
8.0mm	80
10.0mm	100
12.0mm	120
15.0mm	150

Specials Code	
Refer to Sales Office	

Connector Type	
DIN43650	A
M12	B

Hygienic Connection	
RJT	1
Tri-Clamp	2
IDF	3

Pipe Size P	
1"	A
1 1/2"	B
2"	C
2 1/2"	D
3"	E
4"	F

Sheath Length L1 (mm)	
Enter length in mm	

## Options and Accessories



### AUF Plug In Display

Our AUF display fits in between the transmitter and the plug and provides the user with a clear LED local display without affecting the 4-20mA output and it also maintains the IP65 rating for the connector. No separate power supply is needed as the unit draws its power from the signal loop. All of our LTS20 series are compatible with the display when specified with the DIN43650 connector option.



### Mating Connectors and Extension Cables

This data sheet gives details of the most popular options available for this type of sensor but is not intended to give an exhaustive list of possibilities. If you have a special requirement please do not hesitate to contact our sales office for assistance.

### More accessories for your sensor...



Compression Fittings



Pockets / Thermowells



Extension Cables